

# 5G LPDA ANTENNA



An ISO 9001:2015 Certified Company

## Technical Specifications:

|                      |                              |
|----------------------|------------------------------|
| Model No -           | LPDAOD5G14                   |
| Frequency Range      | 698-4000Mhz                  |
| Gain                 | 14 DBI                       |
| VSWR                 | $\leq 1.8 - \leq 1.5$        |
| Front to Back Ratio  | $\geq 15$ dB                 |
| Vertical Beamwidth   | 105° - 59°                   |
| Horizontal Beamwidth | 87° - 48°                    |
| Polarization Type    | Vertical                     |
| PIM(IM3)             | $\leq -107$ dBm @ 2 x 33 dBm |
| Max Power            | 50 W                         |
| Input Impedence      | 50 $\Omega$                  |

---

|                       |                  |
|-----------------------|------------------|
| Operating Temperature | -40 °C to +65 °C |
| Relative Humidity     | 5 to 95%         |
| Lightning Protection  | DC ground        |
| Rated Wind Velocity   | 210 km/h         |

---

|                   |                          |
|-------------------|--------------------------|
| Connector         | N-Female                 |
| Mount             | Pole Mount               |
| Radome Material   | ABS                      |
| Radome Color      | White                    |
| Mounting Hardware | $\Phi$ 35 - $\Phi$ 50 mm |
| Clamp             | U Clamp                  |
| Cable             | RG 58                    |
| Cable Lengh       | 200 MM                   |

## Features

- Wide Frequency Range
- Excellent Electrical Performance
- Maintenance Free

**CALL OR**  **+91-8800386366**

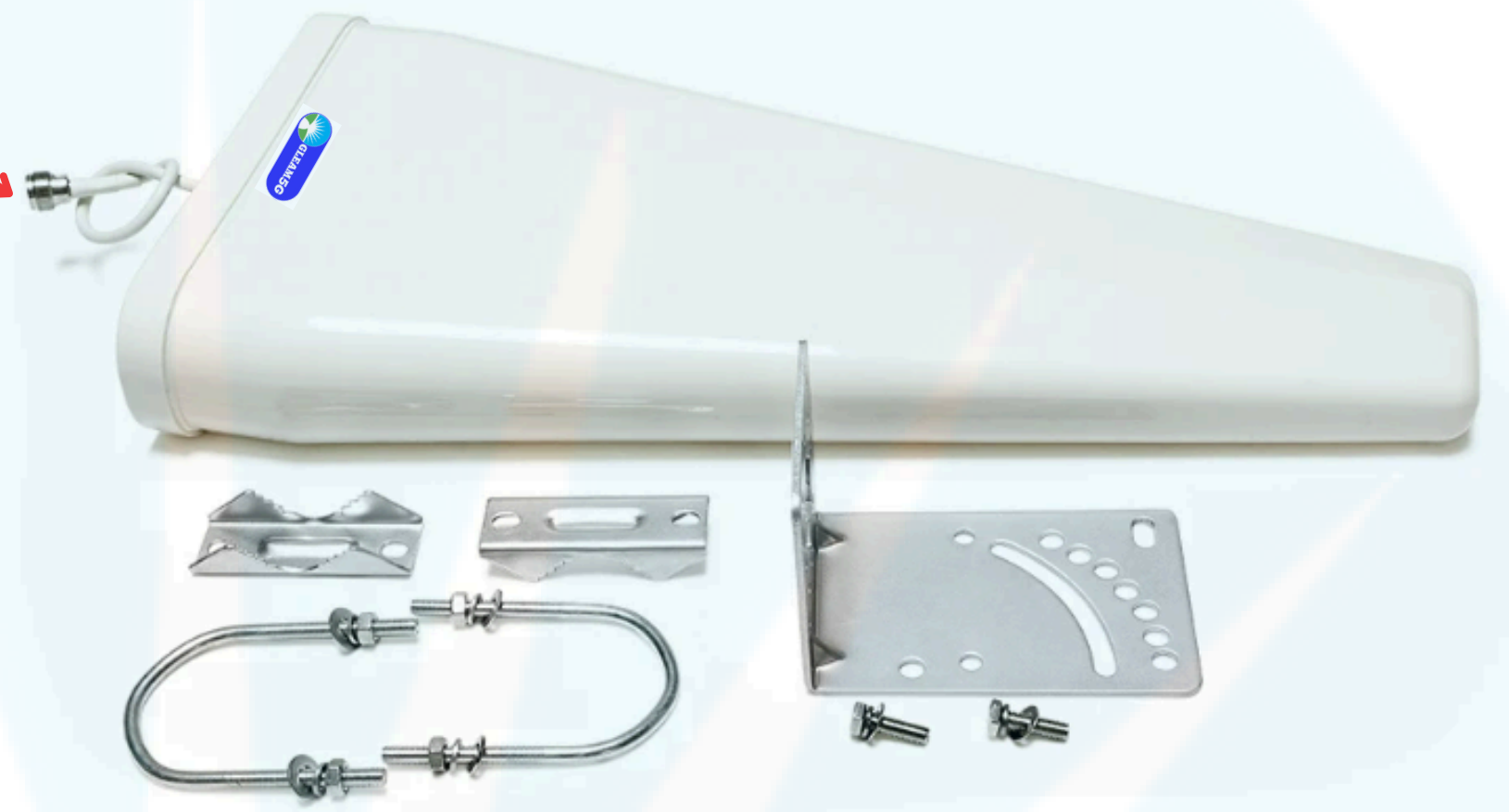
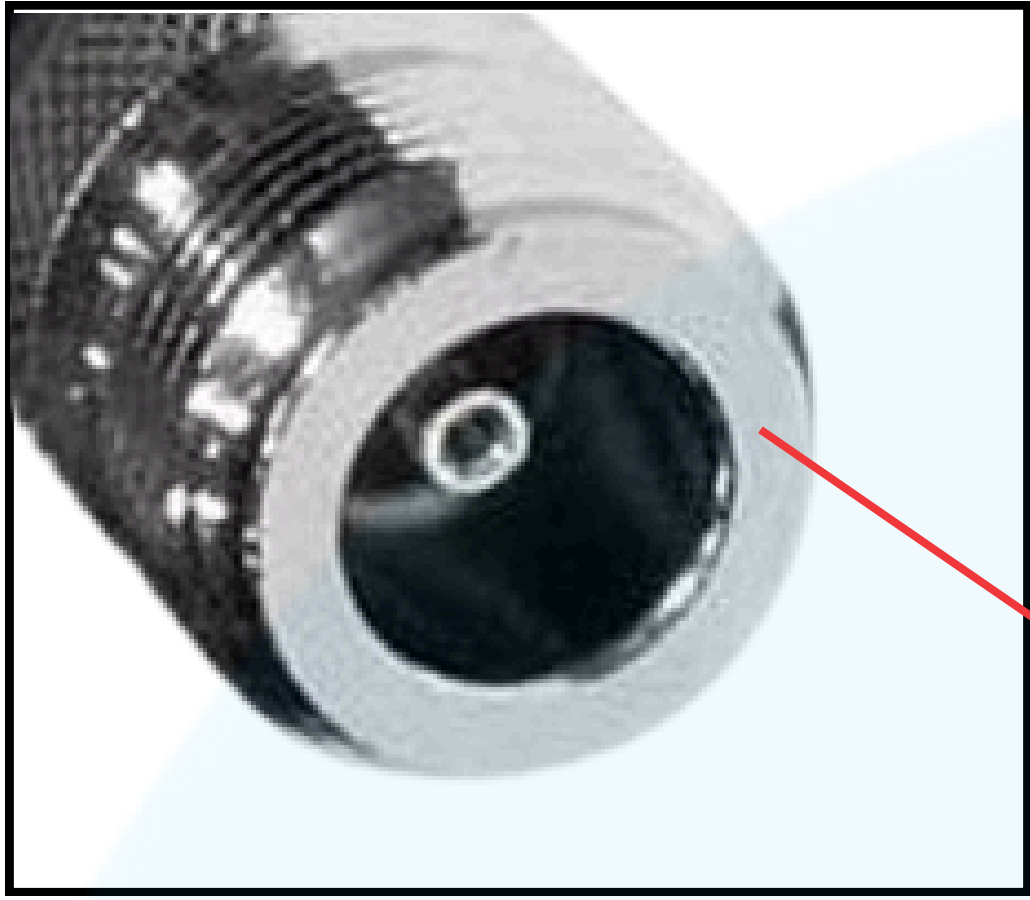
Follow Us For More Updates **GLEAMLIGHTINDIA** /     

Info@gleamlightindia.com www.gleamlightindia.in/gleamlightindia.com

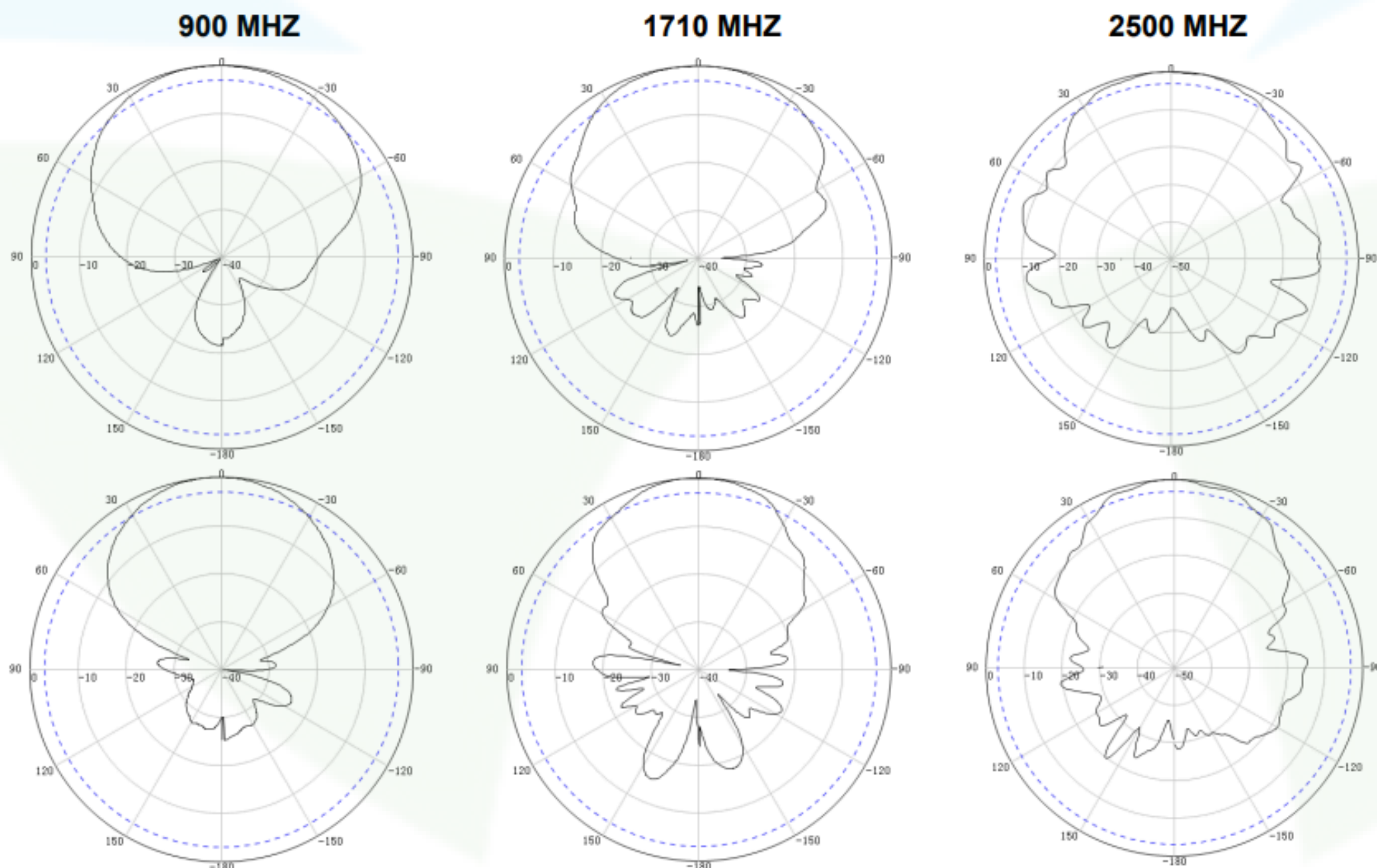
12B Block -A, Behind Kanishka Garden, Amar Colony Main Rohtak Road Nangloi, New Delhi, Delhi 110041



# 5G LPDA ANTENNA



## Radiation








Horizontal

Vertical



CALL OR  +91-8800386366

Follow Us For More Updates **GLEAMLIGHTINDIA** /       
Info@gleamlightindia.com www.gleamlightindia.in/gleamlightindia.com

12B Block -A, Behind Kanishka Garden, Amar Colony Main Rohtak Road Nangloi, New Delhi, Delhi 110041